



Candialift

EPT16-ET

Electric pallet truck 1.6t

■ 48V super power, Ideal out-door solution, Longer run time

Mastering urban logistics

Designed to cope with complex environment



High Obstacle



Road Bumps



Narrow Space

CE

FEATURE

■ Light service weight, high rated capacity, not limited by floor type:

Minimum size vs 2.0ton capacity,with 1465mm turning radius.

■ High passability design:

EPT16-ET can easily drive through 100mm height barrier with patent roll-over load wheel and large drive wheel.

80mm lowered height and 140mm lifting height giving flexibility for pallet and application.

■ Easy disassembly handle design:

Pin through tiller style reduces shipping cost and installation time greatly.

■ DC brushless permanent magnet motor:

Life time maintenance free brushless permanent magnet motor.

■ Innovative frame design:

Distribute majority weight to bottom chassis by patent designed cylinder structure.

■ Shock absorb chassis design:

Special linkage design, minimize the driving difference between smooth ground and rough ground.

■ 48V electronic system:

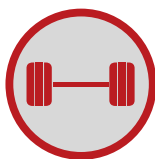
48V electronic system increases efficiency and reliability.

■ Easy maintenance:

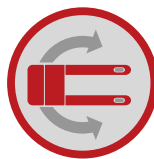
Electronic system and batteries can be completely exposed by pressing one-touch locker.

Drive wheel can be replaced by loosening one nut.

Retractable charging cord.



Rated Capacity up to
1600kg



Turning Radius
1465mm



Driving Wheels diameterxwidth
250x74mm



Lowered Height **80mm** | Max Lifting Height **220mm**



Optional Turnable load wheel to overcome obstacle **100mm**
(Note: Only available for EPT16-ET)



Max. gradeability laden/unladen **8% | 16%**

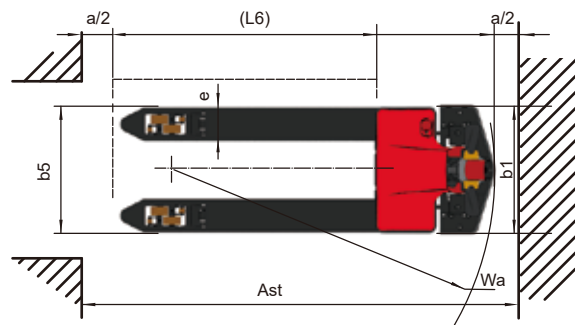
EPT20-ET/EPT16-ET

Electric Pallet Truck 2.0t

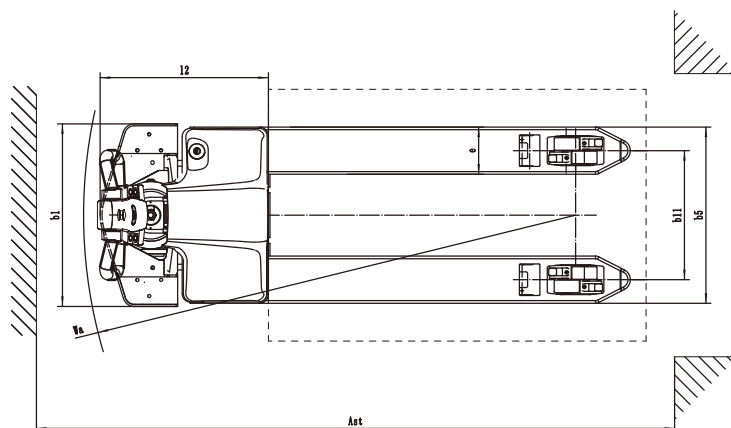
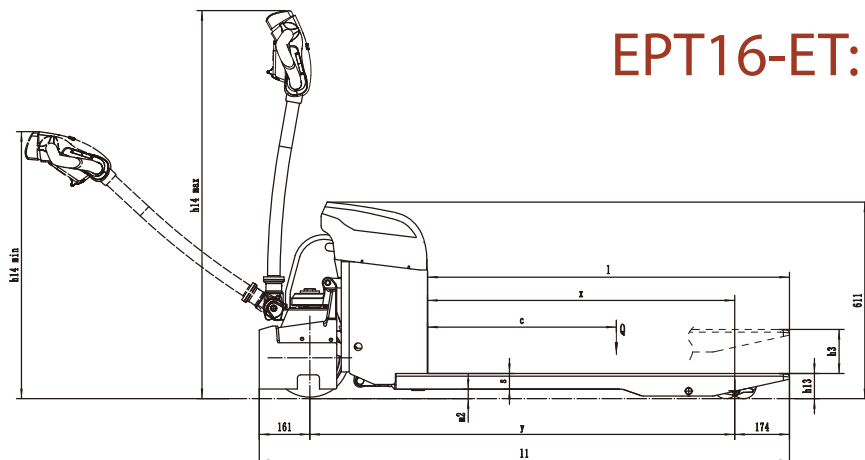
Distinguishing mark					
1.1	Model designation			EPT20-ET	EPT16-ET With roll-over load w heel
1.2	Drive unit			Battery	(Battery)
1.3	Operator type			pedestrian	pedestrian
1.4	rated capacity	Q	kg	2000	1600
1.5	Load center distance	c	mm	600	600
1.6	Load distance	x	mm	874/962	875/976
1.7	Wheelbase	y	mm	1248/1336	1249/1350
Weight					
2.1	Service weight (include battery)		kg	220	215
2.2	Axle loading, laden driving side/loading side		kg	740/1480	625/1190
2.3	Axle loading, unladen driving side/loading side		kg	180/40	180/35
Types,Chassis					
3.1	Tyre type driving w heels/loading w heels			PU/PU	Rubber/PU
3.2	Tyre size, driving w heels (diameter×width)		mm	Φ250x74	Φ255x74
3.3	Tyre size, loading w heels (diameter×width)		mm	4x Φ78x60	4xΦ80x40
3.4	Tyre size, caster w heels (diameter×width)		mm	Φ74x48	Φ74x48
3.5	Wheels, number driving, caster/loading (x=drive w heels)		mm	1x 2/4	1x 2/4
3.6	Track width, front,driving side	b ₁₀	mm	435	435
3.7	Track width,rear,loading side	b ₁₁	mm	410 (535)	410 (535)
Dimensions					
4.4	Lift height	h ₃	mm	140	140
4.9	Height draw bar in driving position min./max.	h ₁₄	mm	750/1170	750/1170
4.15	Lowered height	h ₁₃	mm	82	82
4.19	Overall length	l ₁	mm	1685	1685
4.20	Length to face of forks	l ₂	mm	535	535
4.21	Overall width	b ₁ / b ₂	mm	560 (685)	560 (685)
4.22	Fork dimensions	s/ e/ l	mm	50/150/1150	50/150/1150
4.25	Distance between fork-arms	b ₅	mm	560 (685)	560 (685)
4.32	Ground clearance, center of wheelbase	m ₂	mm	30	30
4.34.1	Aisle width for pallets 1000 × 1200 crossways	Ast	mm	1734	1734
4.34.2	Aisle width for pallets 800 × 1200 lengthways	Ast	mm	1934	1934
4.35	Turning radius	Wa	mm	1496	1510
Performance data					
5.1	Travel speed, laden/ unladen	km/ h	km/h	4/5.5	4/5.5
5.2	Lifting speed, laden/ unladen		m/ s	0.024/0.038	0.024/0.038
5.3	Lowering speed, laden/ unladen		m/ s	0.034/0.025	0.034/0.025
5.8	Max. gradeability, laden/unladen			8/16	10/20
5.10	Service brake type			Electromagnetic	Electromagnetic
Electric engine					
6.1	Drive motor rating S2 60 min		kW	0.75	0.75
6.2	Lift motor rating at S3 15%		kW	0.84	0.84
6.3	The maximum allowed size battery		mm	255*170*200	255*170*200
6.4	Battery voltage/nominal capacity K20			12*4/30	12*4/30
6.5	Battery weight		kg	9.5*4	9.5*4
Addition data					
8.1	Type of drive control			BLDC	BLDC
10.5	Steering type			Mechanical	Mechanical
10.7	Sound pressure level at the driver's ear			74	74

- 1.The parameters in the table are of the standard model. For more information please contact us.
2.The parameters are subject to change without notice.

EPT16-ET:



EPT16-ET:



EPT20-ET:

